

ALCHEMY





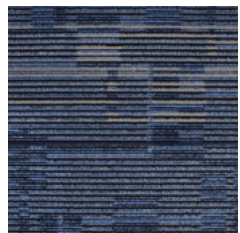
CONSTRUCTION	LOOP
PILE FIBER COMPOSITION	100% Olefin
YARN TYPE	BCF
DYE METHOD	Solution Dyed
PILE WEIGHT	780 g/m ²
NUMBER OF TUFTS	199080/m ²
TUFTING GAUGE	1/12"
PRIMARY BACKING	Non-Woven
SECONDARY BACKING	StableShield - 100% Vinyl
OPTIONAL BACKINGS	Recova -PU Cushion, EcoShield -100% Recycled Vinyl
TILE SIZE	50 cm x 50 cm
PILE HEIGHT	5.0 mm
TOTAL PILE HEIGHT	7.0 mm
PILE TREATMENT	INVISTA Anti-Soil Treatment, Anti-Microbial (Optional)
RECOMMENDED INSTALLATION	Quarter Turn or Monolithic

SPECIFICATIONS

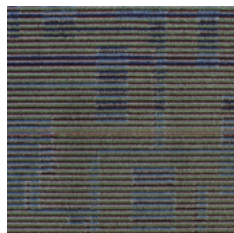
COLOURLINE



ALCHEMY - 754



ALCHEMY - 755



ALCHEMY - 762



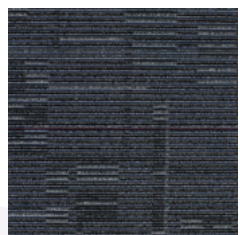
ALCHEMY - 771



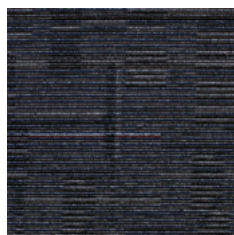
ALCHEMY - 773



ALCHEMY - 775



ALCHEMY - 777



ALCHEMY - 778



ALCHEMY - 795



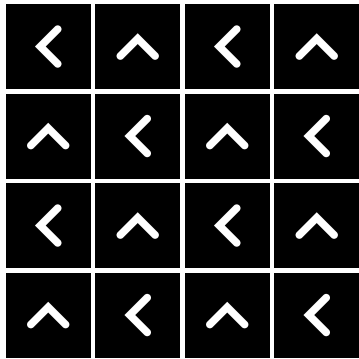
ALCHEMY - 796



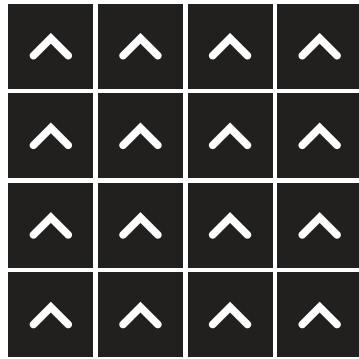


HOW TO INSTALL

QUARTER TURN



MONOLITHIC





Standard
CARPETS

www.standardcarpets.com